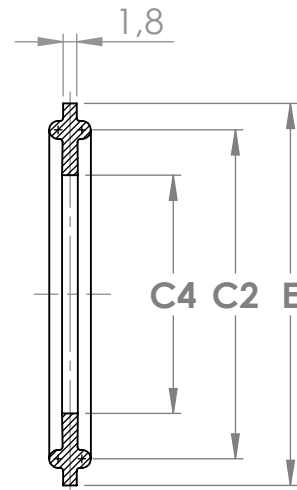
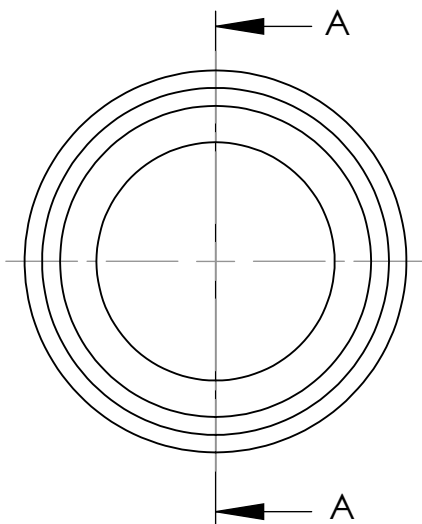
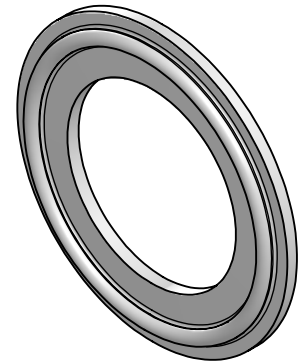


Design Table for: 0604P0001

SMS 3017	E	C4	C2
DN25	50,5	22,8	43,5
DN33,7	50,5	31,5	43,5
DN38	50,5	35,8	43,5
DN51	64,0	48,8	56,5
DN63,5	77,5	60,5	70,5
DN76,1	91,0	73,2	83,5
DN88,9	106,0	85,1	97,0
DN101,6	119,0	97,9	110,0
DN114,3	130,0	110,5	122,0
DN139,7	155,0	135,9	146,0
DN168,3	183,0	163,3	174,0
DN219,1	233,5	214,1	225,0



SECTION A-A

**UP Ultrapharma**

info@ultrapharma.com  
www.ultrapharma.com

1967 DB Heemskerk  
The Netherlands

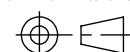
T: +31-(0)251-207050  
F: +31-(0)251-207055

CONFIGURATION  
DN33,7

DESCRIPTION:  
SMS 3017 STEAM-FLON®

The information contained in this drawing is the sole property of Ultrapharma BV. Any reproduction in part or as a whole without written permission of Ultrapharma BV is prohibited.

3RD ANGLE PROJECTION



UNITS:  
mm

SCALE:  
1:1

SHEETSIZE  
A4